

I hereby certify that this plan, specification, or report was prepared by me or under my direct supervision and that I am a duly Registered Professional Engineer under the laws of the State of North Dakota.

TRAVIS DILLMAN, P.E.

Date: \_\_\_\_\_

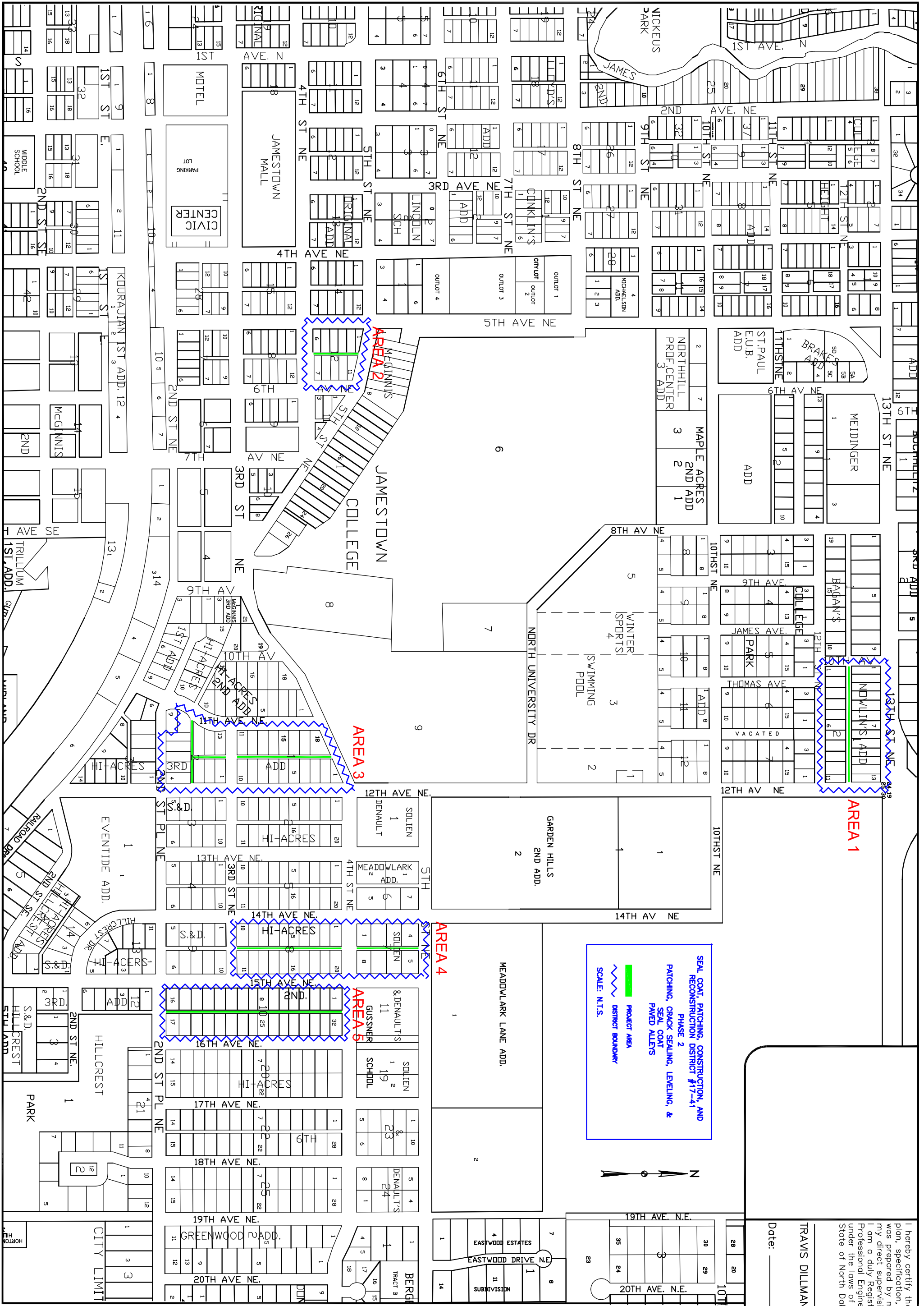
REVISIONS

NO.	DESCRIPTION

DRAWN BY  
 CHECKED BY

CITY OF JAMESTOWN  
 ENGINEERING DEPARTMENT

SEAL COAT, PATCHING, CONSTRUCTION & RECONSTRUCTION DISTRICT #17-41  
 PHASE I PATCHING, CRACK SEALING, LEVELING, CURB & GUTTER, AND SEAL COAT, STREETS & AVENUES



I hereby certify that this plan, specification, or report was prepared by me or under my direct supervision and that I am a duly Registered Professional Engineer under the laws of the State of North Dakota.

TRAVIS DILLMAN, P.E.

Date: \_\_\_\_\_

REVISIONS

DRAWN BY  
 CHECKED BY

CITY OF JAMESTOWN  
 ENGINEERING DEPARTMENT

SEAL COAT, PATCHING, CONSTRUCTION & RECONSTRUCTION DISTRICT #17-41  
 PHASE I SPOT EDGE MILLING AND SEAL COAT, PAVED ALLEYS

SHEET  
 3/6

I hereby certify that this plan, specification, or report was prepared by me or under my direct supervision and that I am a duly Registered Professional Engineer under the laws of the State of North Dakota.

TRAVIS DILLMAN, P.E.

Date: \_\_\_\_\_

REVISIONS


DRAWN BY  
↓

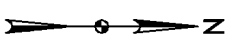
CHECKED BY  
TD

CITY OF JAMESTOWN  
ENGINEERING DEPARTMENT

SEAL COAT, PATCHING, CONSTRUCTION & RECONSTRUCTION DISTRICT #17-41  
PHASE 2 PATCHING, CRACK SEALING, & SEAL COAT ALLEYS AND PHASE 3 WASTE WATER PLANT DISINFECTION ROAD

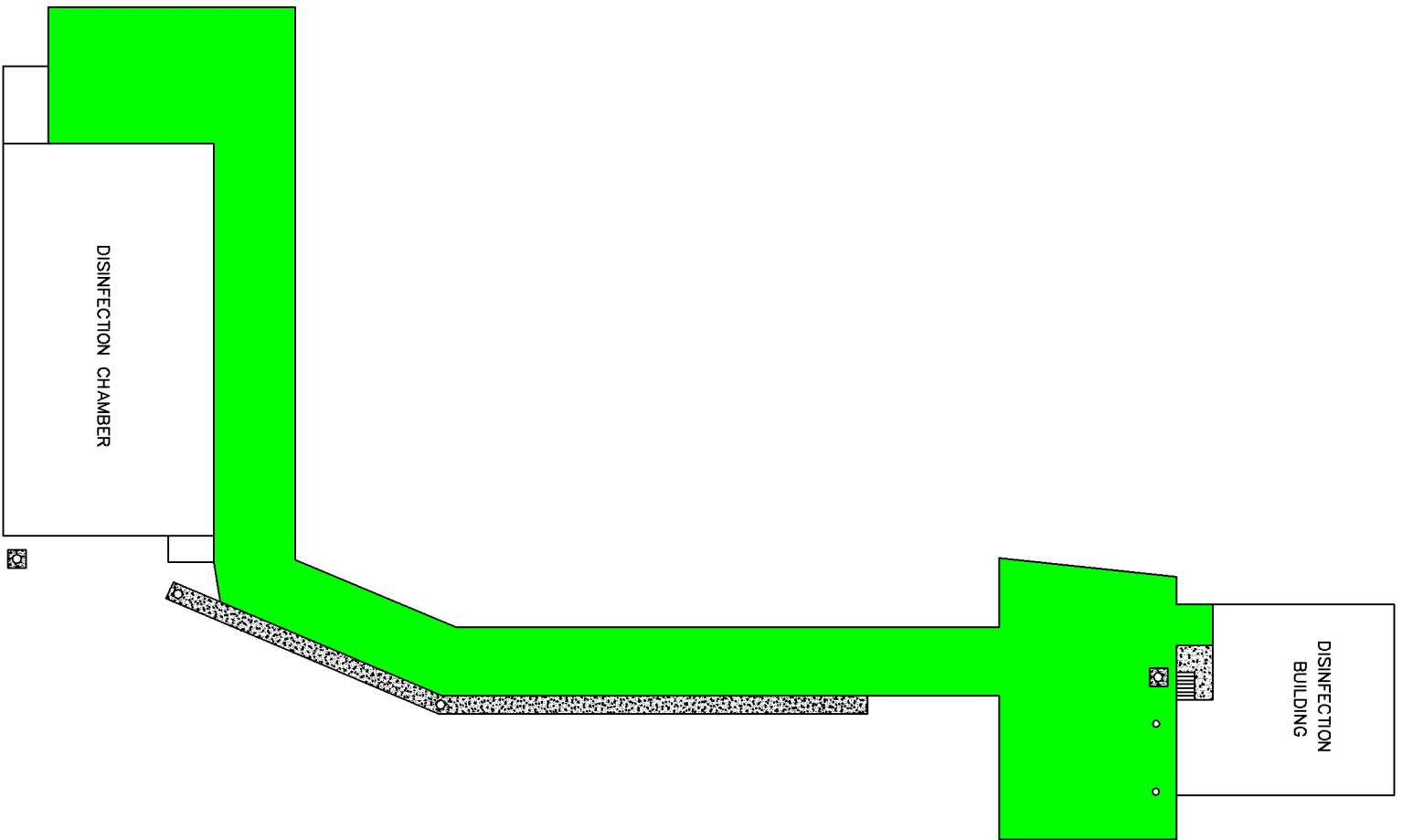
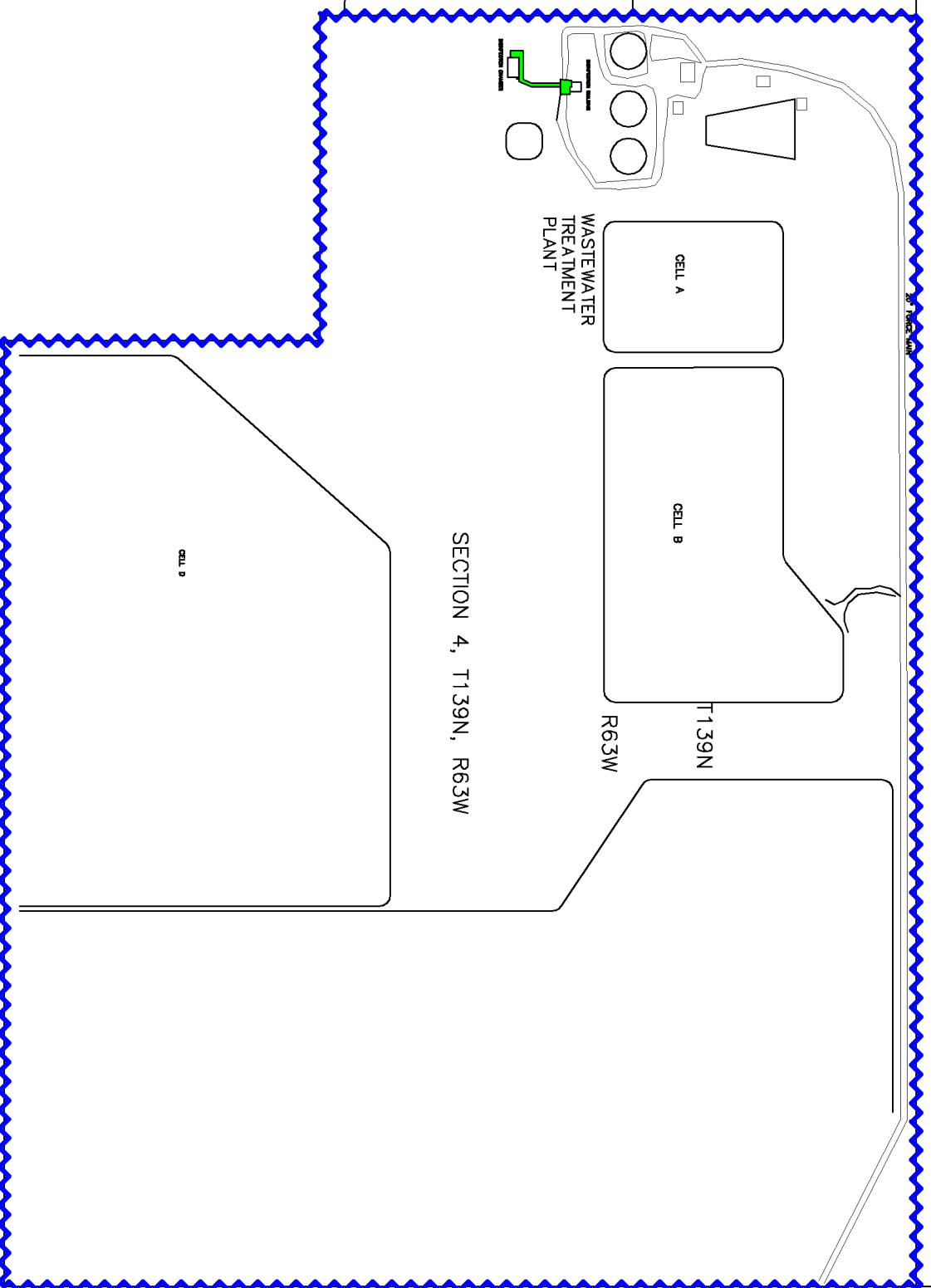
SHEET  
4/6

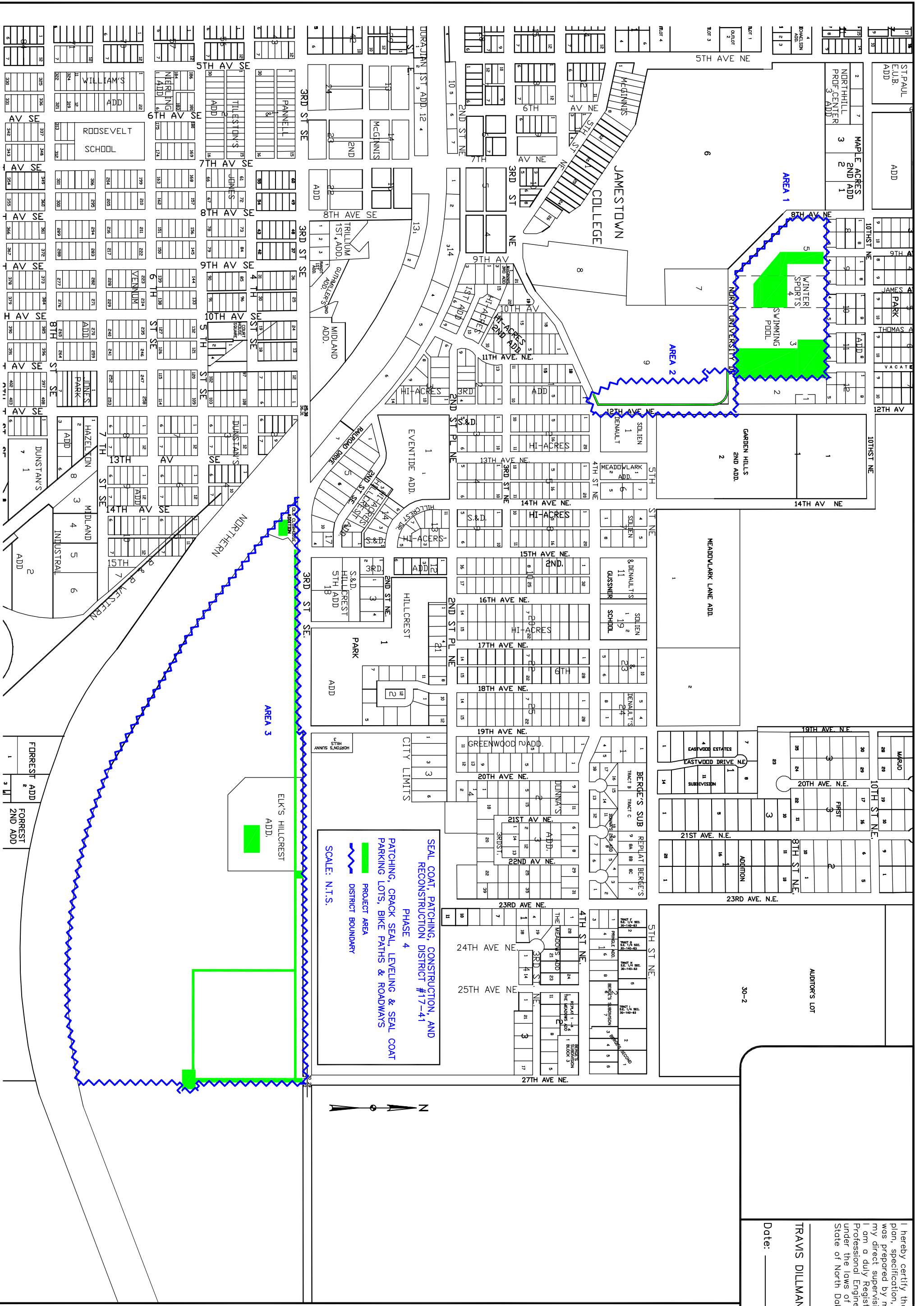
SEAL COAT, PATCHING, CONSTRUCTION, AND RECONSTRUCTION DISTRICT #17-41  
PHASE 3  
PATCHING, CRACK SEAL, LEVELING & SEAL COAT WASTE WATER PLANT DISINFECTION ROAD  
PROJECT AREA  
DISTRICT BOUNDARY  
SCALE: N.T.S.



INTERSTATE 94

BLOOM INTERCHANGE





I hereby certify that this plan, specification, or report was prepared by me or under my direct supervision and that I am a duly Registered Professional Engineer under the laws of the State of North Dakota.

TRAVIS DILLMAN, P.E.

Date: \_\_\_\_\_

**REVISIONS**

NO.	DESCRIPTION

**DRAWN BY**  
 ↗  
**CHECKED BY**  
 ↘

**CITY OF JAMESTOWN  
 ENGINEERING DEPARTMENT**

**SEAL COAT, PATCHING, CONSTRUCTION & RECONSTRUCTION DISTRICT #17-41  
 PHASE 4 PATCHING, CRACK SEALING, LEVELING & SEAL COAT PARKING LOTS, BIKE PATHS & ROADWAYS**

I hereby certify that this plan, specification, or report was prepared by me or under my direct supervision and that I am a duly Registered Professional Engineer under the laws of the State of North Dakota.

TRAVIS DILLMAN, P.E.

Date: \_\_\_\_\_

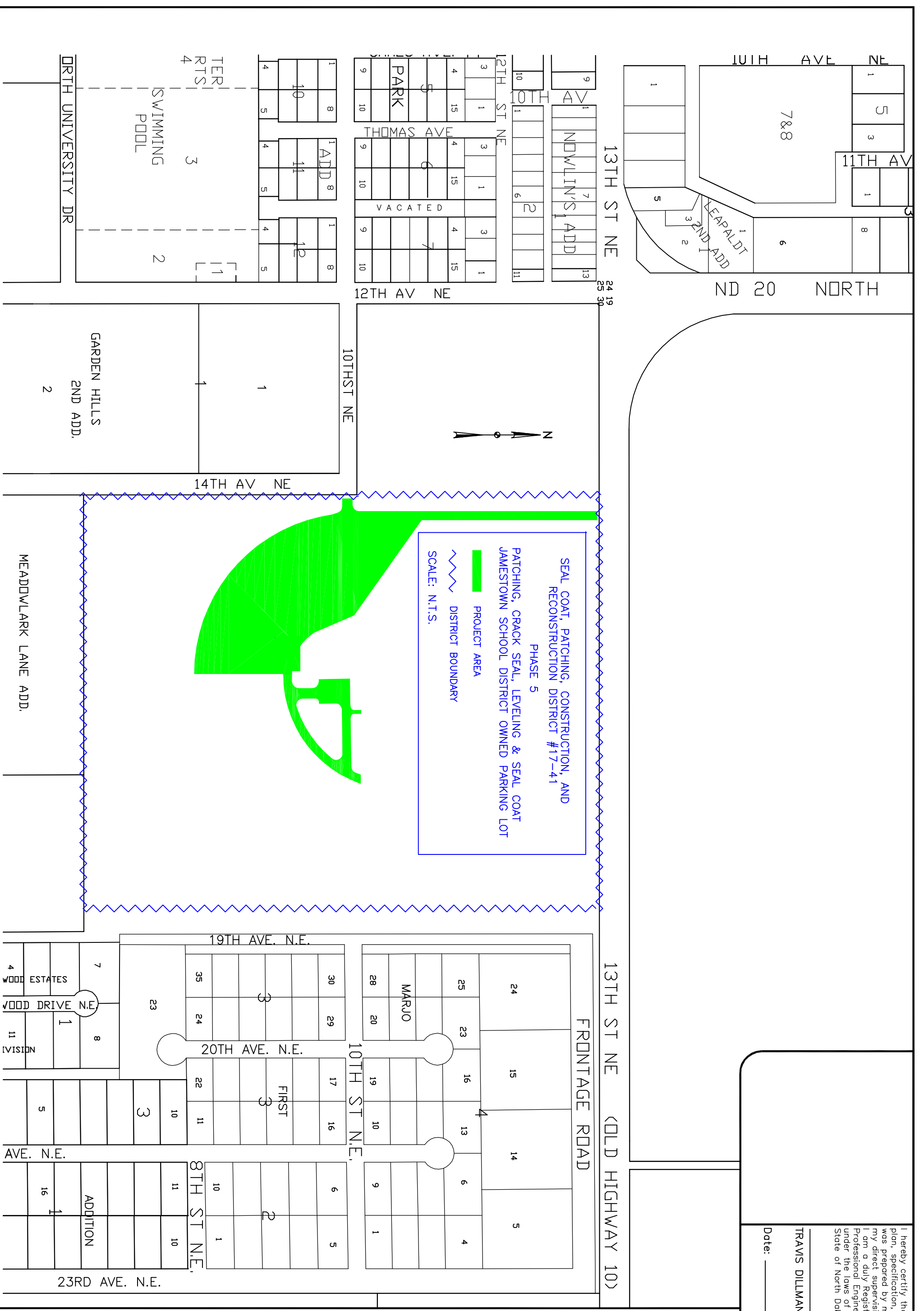
REVISIONS


DRAWN BY  
 CHECKED BY

CITY OF JAMESTOWN  
 ENGINEERING DEPARTMENT

SEAL COAT, PATCHING, CONSTRUCTION & RECONSTRUCTION DISTRICT #17-41  
 PHASE 5 PATCHING, CRACK SEALING, LEVELING & SEAL COAT JAMSETOWN SCHOOL DISTRICT OWEND PARKING LOT

SHEET  
 6/6




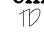
I hereby certify that this plan, specification, or report was prepared by me or under my direct supervision and that I am a duly Registered Professional Engineer under the laws of the State of North Dakota.

TRAVIS DILLMAN, P.E.

Date: \_\_\_\_\_

REVISIONS

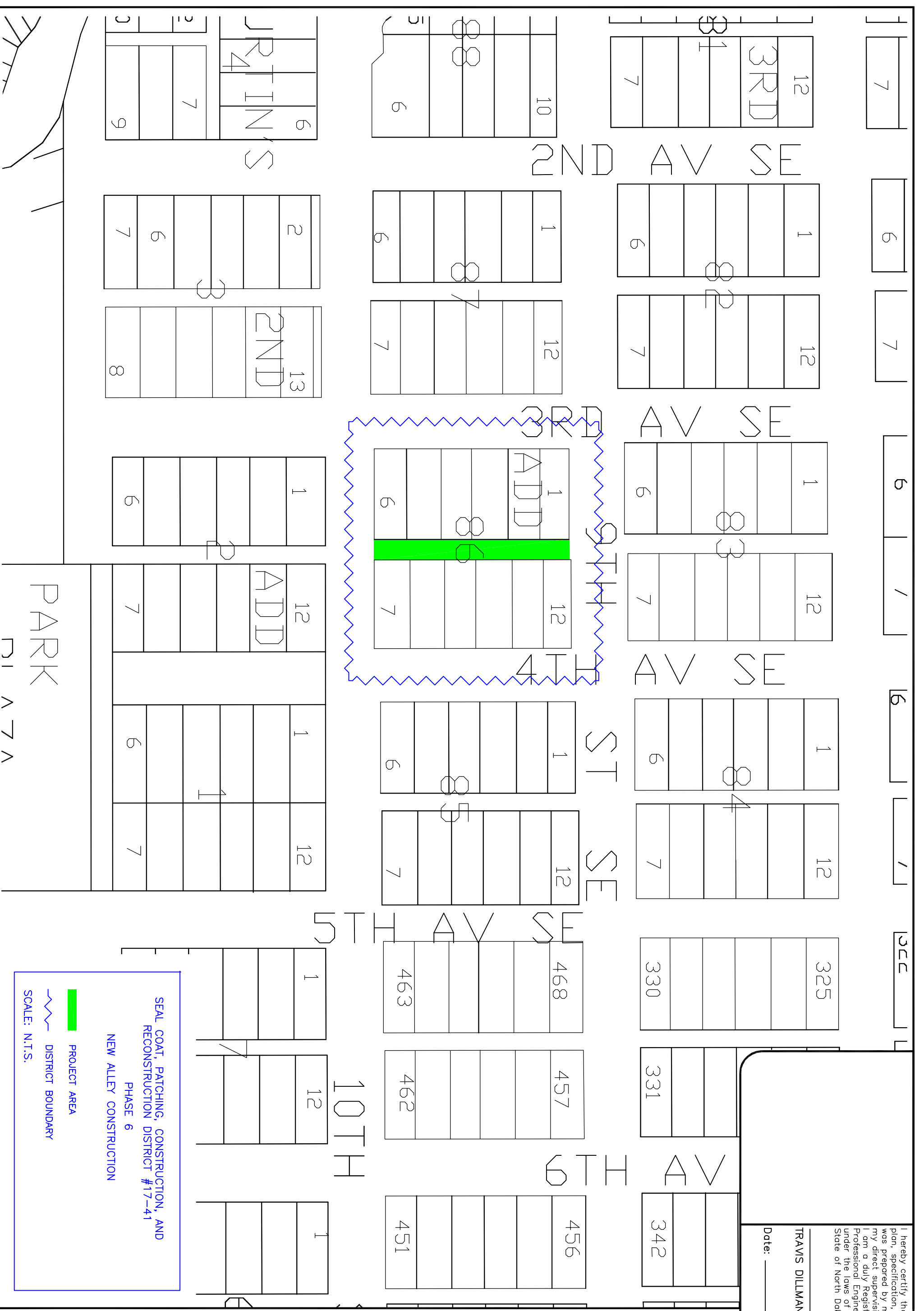
NO.	DESCRIPTION

DRAWN BY  
  
 CHECKED BY  




SEAL COAT, PATCHING, CONSTRUCTION & RECONSTRUCTION DISTRICT #17-41  
 PHASE 6  
 NEW ALLEY CONSTRUCTION

SHEET  
 7/7



SEAL COAT, PATCHING, CONSTRUCTION, AND RECONSTRUCTION DISTRICT #17-41  
 PHASE 6  
 NEW ALLEY CONSTRUCTION

PROJECT AREA

DISTRICT BOUNDARY

SCALE: N.T.S.

PARK  
 21 A 7 A