

I hereby certify that this plan, specification, or report was prepared by me or under my direct supervision and that I am a duly Registered Professional Engineer under the laws of the State of North Dakota.

REED O. SCHWARTZKOPF, P.E.

Date: \_\_\_\_\_

**REVISIONS**


**DRAWN BY**  
ASB  
**CHECKED BY**  
RO5

**CITY OF JAMESTOWN  
ENGINEERING DEPARTMENT**

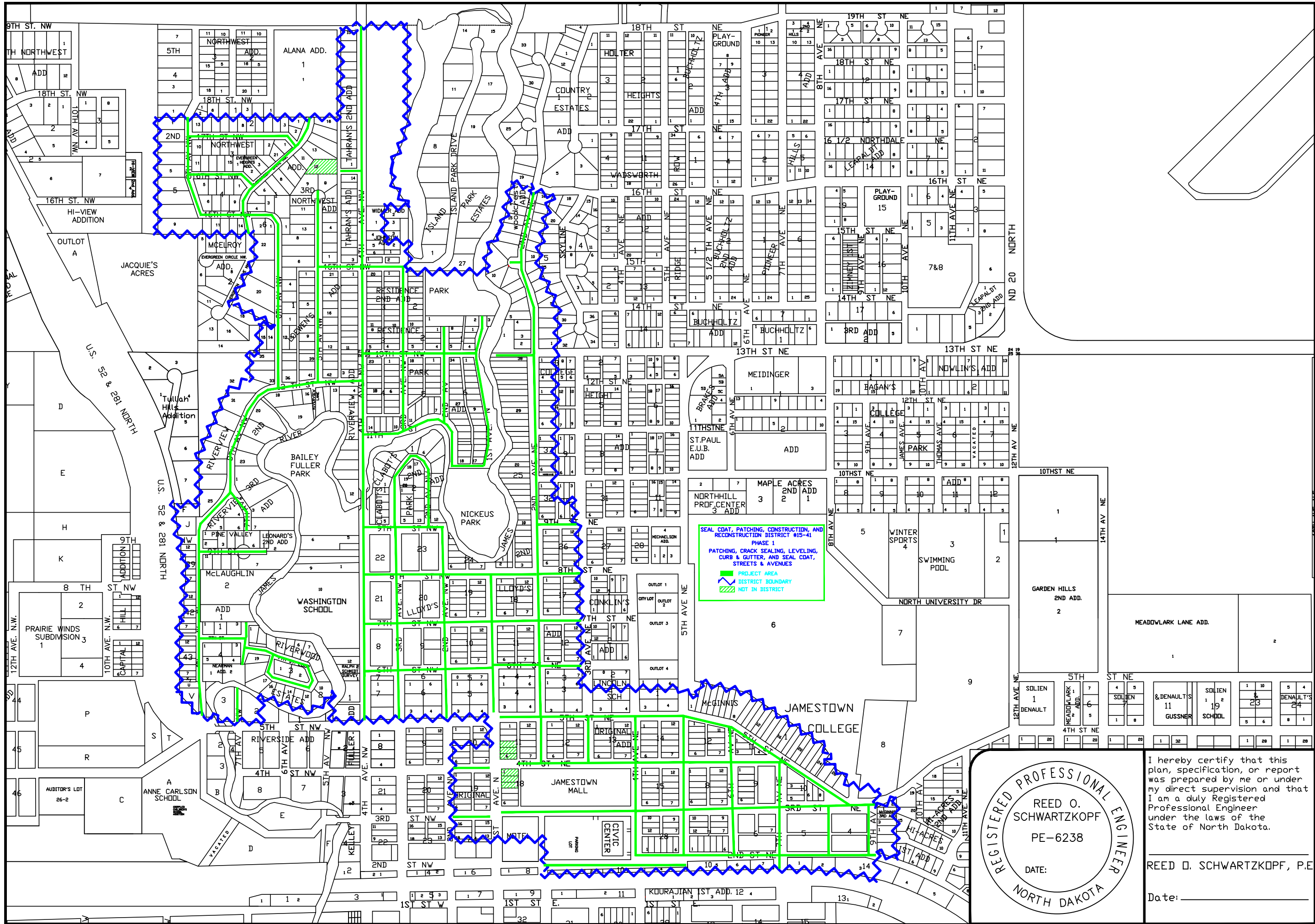
**SEAL COAT, PATCHING, CONSTRUCTION  
& RECONSTRUCTION DISTRICT #15-41  
TITLE SHEET**

**SHEET  
1/5**

# SEAL COAT, PATCHING, CONSTRUCTION, AND RECONSTRUCTION DISTRICT #15-41

- PHASE 1- PATCHING, CRACK SEALING, LEVELING, CURB & GUTTER, AND SEAL COAT, STREETS & AVENUES
- PHASE 2- PATCHING, CRACK SEALING, LEVELING, AND SEAL COAT ALLEYS
- PHASE 3- PATCHING, CRACK SEALING, LEVELING, AND SEAL COAT NICKEUS PARK ROADWAY
- PHASE 4- PATCHING, CRACK SEALING, LEVELING, AND SEAL COAT CITY OWNED PARKING LOTS

## JAMESTOWN, NORTH DAKOTA



SEAL COAT, PATCHING, CONSTRUCTION, AND RECONSTRUCTION DISTRICT #15-41  
 PHASE 1  
 PATCHING, CRACK SEALING, LEVELING, CURB & GUTTER, AND SEAL COAT, STREETS & AVENUES

— PROJECT AREA  
- - - DISTRICT BOUNDARY  
/ / / NOT IN DISTRICT

REGISTERED PROFESSIONAL ENGINEER  
 REED O. SCHWARTZKOPF  
 PE-6238  
 DATE: \_\_\_\_\_  
 NORTH DAKOTA

I hereby certify that this plan, specification, or report was prepared by me or under my direct supervision and that I am a duly Registered Professional Engineer under the laws of the State of North Dakota.

REED O. SCHWARTZKOPF, P.E.  
 Date: \_\_\_\_\_

REVISIONS	

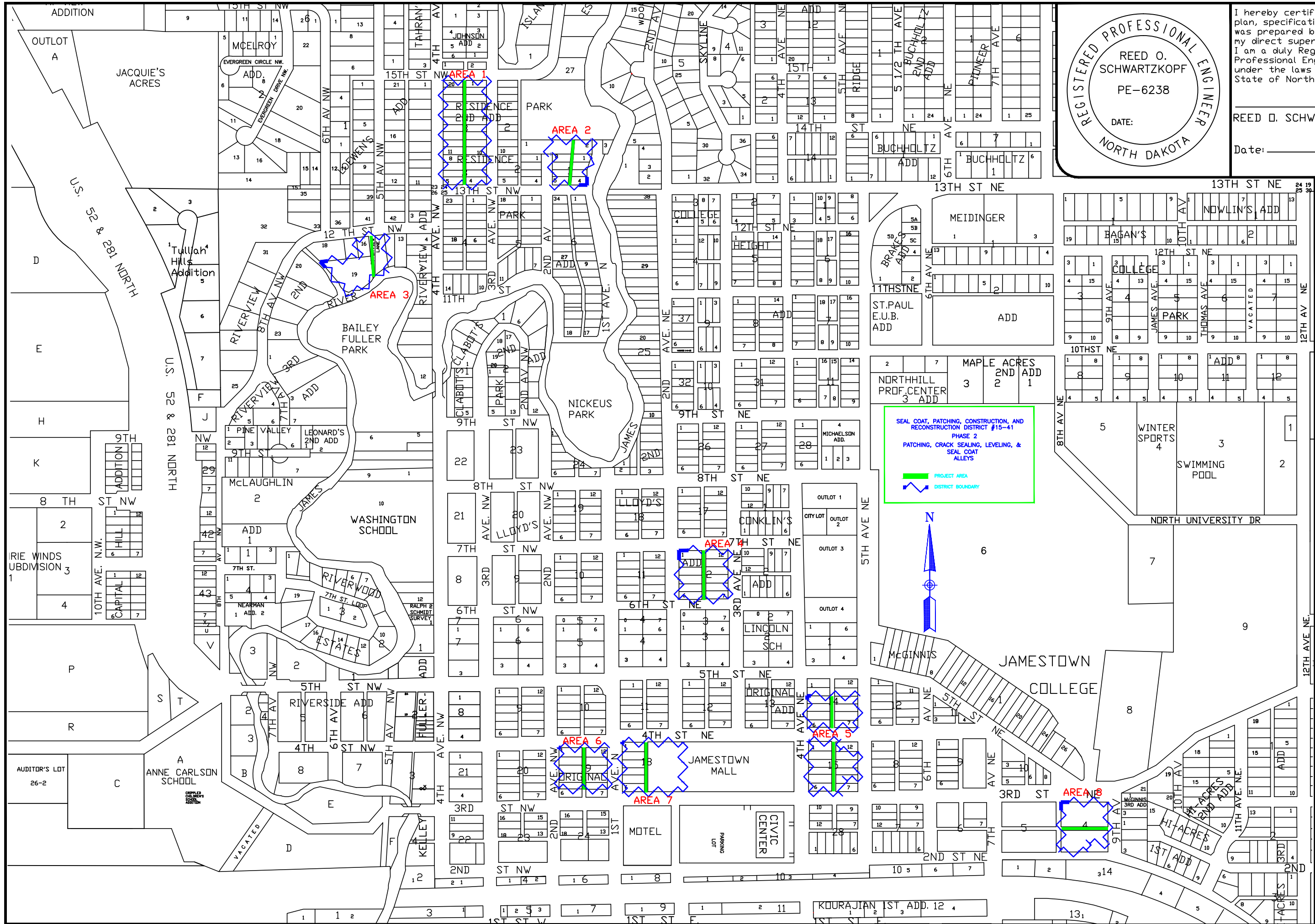
DRAWN BY  
 ASF

CHECKED BY  
 ROS

CITY OF JAMESTOWN  
 ENGINEERING DEPARTMENT

SEAL COAT, PATCHING, CONSTRUCTION & RECONSTRUCTION DISTRICT #15-41  
 PHASE I PATCHING, CRACK SEALING, LEVELING, CURB & GUTTER, AND SEAL COAT, STREETS & AVENUES

SHEET  
 2/5



REGISTERED PROFESSIONAL ENGINEER  
 REED O. SCHWARTZKOPF  
 PE-6238  
 DATE: \_\_\_\_\_  
 NORTH DAKOTA

I hereby certify that this plan, specification, or report was prepared by me or under my direct supervision and that I am a duly Registered Professional Engineer under the laws of the State of North Dakota.

REED O. SCHWARTZKOPF, P.E.  
 Date: \_\_\_\_\_

REVISIONS	

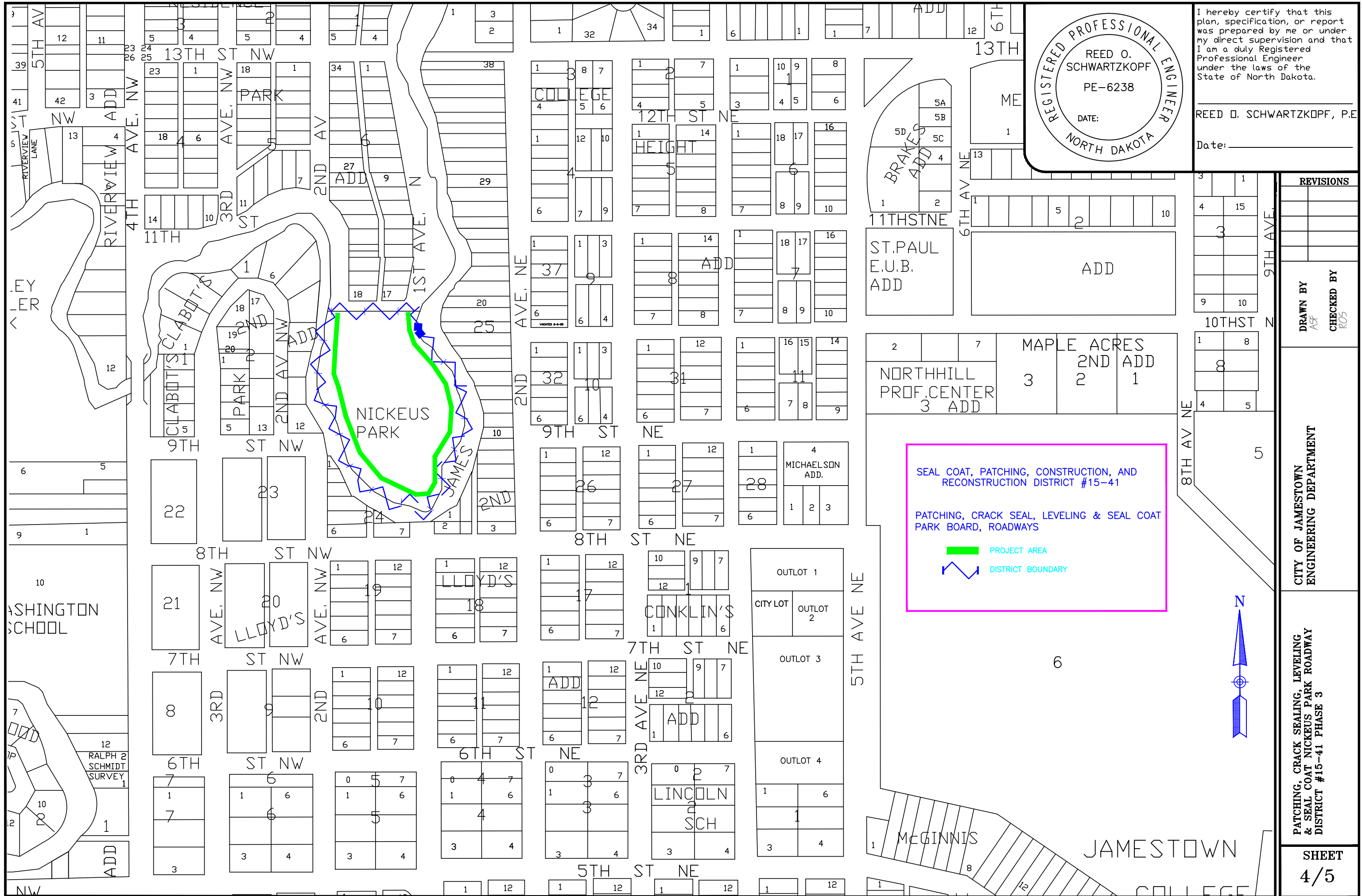
DRAWN BY  
 ASF

CHECKED BY  
 ROS

CITY OF JAMESTOWN  
 ENGINEERING DEPARTMENT

PATCHING, CRACK SEALING, LEVELING  
 & SEAL COAT ASPHALT ALLEYS  
 DISTRICT #15-41 PHASE 2

SHEET  
 3/5



REGISTERED PROFESSIONAL ENGINEER  
 REED O. SCHWARTZKOPF  
 PE-6238  
 DATE: \_\_\_\_\_  
 NORTH DAKOTA

I hereby certify that this plan, specification, or report was prepared by me or under my direct supervision and that I am a duly Registered Professional Engineer under the laws of the State of North Dakota.

REED O. SCHWARTZKOPF, P.E.

Date: \_\_\_\_\_

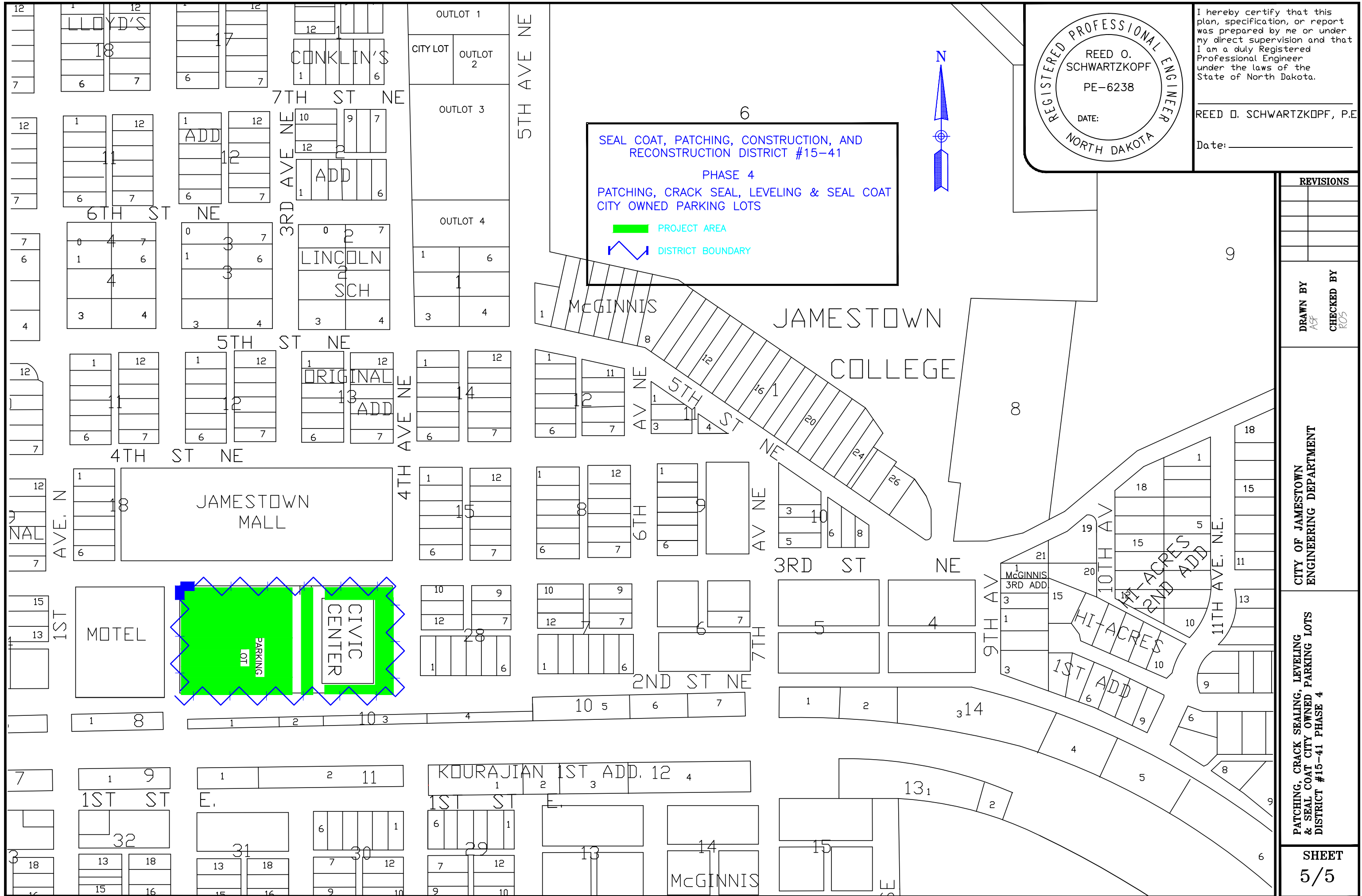
REVISIONS	

DRAWN BY  
 ASF

CHECKED BY  
 ROS

CITY OF JAMESTOWN  
 ENGINEERING DEPARTMENT

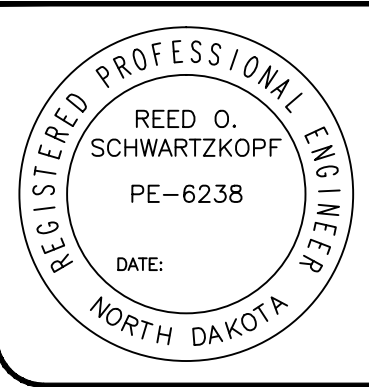
PATCHING, CRACK SEALING, LEVELING  
 & SEAL COAT NICKEUS PARK ROADWAY  
 DISTRICT #15-41 PHASE 3



SEAL COAT, PATCHING, CONSTRUCTION, AND RECONSTRUCTION DISTRICT #15-41

PHASE 4  
 PATCHING, CRACK SEAL, LEVELING & SEAL COAT CITY OWNED PARKING LOTS

PROJECT AREA  
 DISTRICT BOUNDARY



I hereby certify that this plan, specification, or report was prepared by me or under my direct supervision and that I am a duly Registered Professional Engineer under the laws of the State of North Dakota.

REED O. SCHWARTZKOPF, P.E.

Date: \_\_\_\_\_

REVISIONS	
DRAWN BY ASF	CHECKED BY ROS

CITY OF JAMESTOWN  
 ENGINEERING DEPARTMENT

PATCHING, CRACK SEALING, LEVELING & SEAL COAT CITY OWNED PARKING LOTS DISTRICT #15-41 PHASE 4